



Psychology GCSE



Why Study Psychology at Wildern?

This is a new GCSE course being offered to students from September 2022.

This engaging and effective qualification introduces students to the fundamentals of psychology, developing critical analysis, independent thinking and research skills.

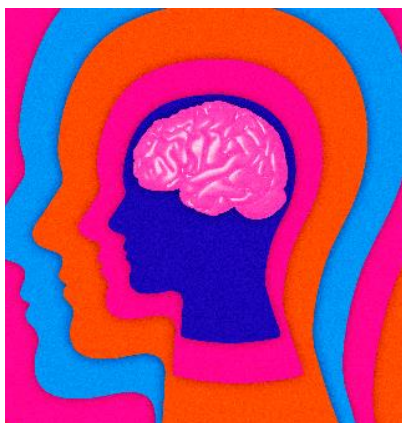
If you are a student that wants to learn about individual human behaviour this could be the course for you!

The AQA course is 100% exam consisting of two papers sat at the end of Year 11.

The modules covered:

Paper 1 (50%)

- 1) Introduction to Psychology
- 2) Memory
- 3) Perception
- 4) Development
- 5) Research Methods



Paper 2 (50%)

- 1) Social Influence
- 2) Language, Thought and Communication
- 3) Brain and Neuropsychology
- 4) Psychological Problems

Assessments use multiple choice, short answer and extended writing/essays to assess knowledge, understanding, and application and evaluation skills.

Knowledge of research methods gained through classroom experience of practical psychology will be assessed using scenario-based questions.

A strong interest/capability in Maths and Science would be beneficial to study this course, due to modules discussing data and modern methods of psychological research.

If you have any questions, or would like any further information regarding the course please contact the Lead for Psychology Mrs Slater at c.slater@wilder.org.